



FVP10 Series

The NEW, Front Operating, Vocal Direct Thermal Printer



Given its significant expertise and experience in providing high-performance printing solutions for the worldwide retail market, Star has now developed another industry-first with the introduction of a unique front operating, multi-functional direct thermal printer with speech functionality.

Once again Star has shown that there is no compromise between functionality, cost and innovation providing this versatile printer with high-speed performance, paper saving features as well as a new method of user and printer interaction with the voice communication tool.

- High quality 203 dpi output with high print speeds of up to 250mm/second combined with fast, efficient throughput (406 x 203 double density selectable)
- High reliability – (60 million lines MCBF) Autocutter – 2 million cuts
- Barcodes, receipts, labels & tickets can all be printed on media from 0.065 to 0.15mm in thickness with linear paper width adjustment from 58 to 80mm allowing for complete application functionality
- Dual interface facility with USB as standard and additional port for second plug-in options – Serial, Parallel, USB, Ethernet, PoweredUSB

- Options include: PS60 Power supply option, Wall / Shelf mount, Traditional and PoweredUSB interfaces as well as Cable Cover. (USB cable included in box at purchase with installation CD-ROM & power switch cover)
- Tough and durable splash-proof casing with IXP1 certification and downwards angled paper exit to prevent liquid intake
- FVP10 platform printer. The square design, front operation and flat top provide a space-saving opportunity as objects up to 7Kg can be placed on top of the printer without interfering with its operation – chip and pin pads, graphic displays, scanners etc.



Compatible with




Linux



JAVAPOS™

OPOS




"Instinctive" compatibility with majority of POS operating platforms, with quality suite of drivers



The clean design “counter mounter”



The FVP10 offers compact shelving opportunities with the Shelf mount option and power supply holder.



Using space efficiently in a retail or hospitality environment is absolutely vital. In a bar or kitchen it's important from a practical point-of-view and reducing on-counter clutter makes these areas safer too. And, with ever-increasing requirements to make boutiques and shops as aesthetically enticing to customers as possible, many retailers are seeing the benefits of keeping

sales areas clutter free too. With the shelf mount option, the FVP10 can be discreetly mounted under a counter or sales desk keeping these areas clear and offering opportunities to use the space much more efficiently as a display area or focal point for pushing a particular item or line.



Auto 80 to 58mm wide Compression

FRESHCO	
Food doesn't get any fresher	
5 The Square, Middletown, MT2 5RT	
VAT No: 123 4567 89	
Tel: 01986 1234569	
White Mushrooms	1.29
Smoked Salmon	4.99
Baked Beans in Tom Sauce 840g	1.25
Macaroni Cheese 400g	0.93
Gazpacho Soup 745g	3.39
Echo Falls Shiraz 75cl	5.49
After Shave Conditioning Gel	3.49
Fairtrade Bananas	0.99
Organic Skimmed Milk 1L	0.99
Soya Light Milk 1L	1.28
6 Yorkshire Puddings 180g	3.39
Chicken Stock	2.48
Arborio Risotto Rice 500g	2.96
Egg Noodles Medium 300g	1.21
Giant Couscous 300g	1.99
Extra Virgin Olive Oil 1L	7.39
Chocolate Malt Syrup 623g	3.89
Dried Organic Basil 12g	1.89
Grilled Piquillo Peppers 225g	1.98

FRESHCO	
Food doesn't get any fresher	
5 The Square, Middletown, MT2 5RT	
VAT No: 123 4567 89	
Tel: 01986 1234569	
White Mushrooms	1.29
Smoked Salmon	4.99
Baked Beans in Tom Sauce 840g	1.25
Macaroni Cheese 400g	0.93
Gazpacho Soup 745g	3.39
Echo Falls Shiraz 75cl	5.49
After Shave Conditioning Gel	3.49
Fairtrade Bananas	0.99
Organic Skimmed Milk 1L	0.99
Soya Light Milk 1L	1.28
6 Yorkshire Puddings 180g	3.39
Chicken Stock	2.48
Arborio Risotto Rice 500g	2.96
Egg Noodles Medium 300g	1.21
Giant Couscous 300g	1.99
Extra Virgin Olive Oil 1L	7.39
Chocolate Malt Syrup 623g	3.89
Dried Organic Basil 12g	1.89
Grilled Piquillo Peppers 225g	1.98
Sub Total:	54.26
Total:	54.26
Card Number	***** 2112
Expiry Date	05/11 Swiped
Merchant ID	5150345
Authorisation Code	034765
Please retain for your records	

Great for the environment and your bottom line

With the ever-growing need to protect the environment, Star is constantly endeavouring to reduce environmental damage through design and innovation.

One of the key developments with the FVP10 is the provision of sophisticated software which automatically reduces receipts (from the standard 80mm width) by 67% horizontally and 50% vertically, so that a receipt can be printed on 58mm paper.

This offers huge savings on material costs for our customers and minimizes environmental damage.



The unique voice feature that everyone's talking about...

The FVP10 is the first front operating POS printer to provide speech functionality with up to 255 voice commands. The audio can be streamed directly from the PC using the Star Sound Tool.

There is a default library of voice commands such as "Please take your receipt" or "Food order coming in" but more can easily be recorded in any language using the Star Sound Tool so that the printer is in fact multi-lingual!

There is an internal speaker with an audio jack for very noisy environments where external speakers may be necessary.

This feature makes it an invaluable tool for members of staff and customers alike.

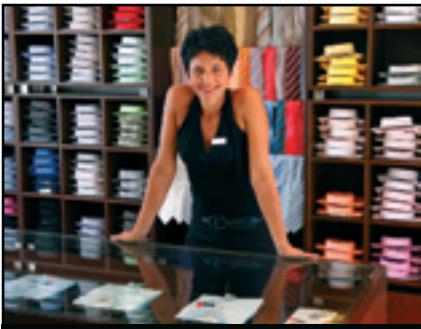


Front loading and "Drop-In & Print"



Star's experience in the hospitality, retail and kiosk industry has resulted in a host of dedicated features, specifically designed to match the needs of all types of environment. The FVP10 is the only POS printer on the market to feature a unique drawer style front-loading system that offers true "Drop-In & Print" paper loading. This makes it perfect for use on kitchen shelving systems or under a counter and ensures that re-loading time is kept to a minimum.





The Retail Printer

- ▶ High Speed ▶ High Quality Graphics
- ▶ Logos and Coupons ▶ Increases Counter Space



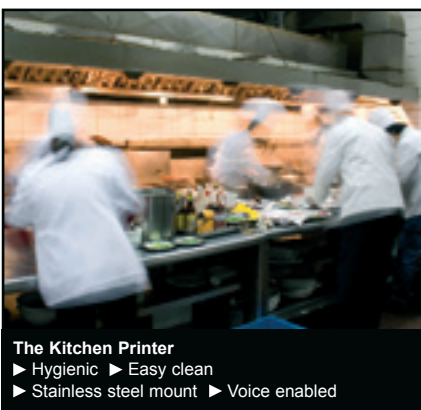
The Hospitality Printer

- ▶ High Speed ▶ Logos and Coupons
- ▶ Increases Counter Space ▶ Voice Enabled



The Kiosk Printer

- ▶ High Speed ▶ Reliability ▶ Easy-Load



The Kitchen Printer

- ▶ Hygienic ▶ Easy clean
- ▶ Stainless steel mount ▶ Voice enabled

FVP10 Printer Specifications

Printer Method	Direct Thermal Line Printing with drawer style paper loading and front paper exit
Print Speed	up to 250mm/second
Print Resolution (v x h) Double Density Graphics	203 x 203 dpi 406 x 203 dpi (selectable)
Printer Case Design	Flat top platform printer with splashproof downward paper exit & IXP1 certificate
Print Width Automatic Compression Mode	up to 72mm 72mm to 52mm (576 reduced to 384 pixels)
Paper Width Media Type Thickness Roll Diameter Paper Loading Reflective Black Mark Paper End / Near End Sensor Print Width	58 – 80mm adjustable Receipts, Tickets, Labels (Black Mark) 0.065 – 0.15mm 83mm "Drop-In & Print" Easy Load All standard Max. 80mm wide = 72mm Min. 58mm wide = 52mm
No of Columns	48 / 64 columns
Top Margin	13mm default / 3mm selectable (full cut mode)
Barcodes	9 versions / PDF417 and QR (Maxicode option pending)
Voice Function	Internal speaker plus audio jack connector for external speaker if required
Sound Storage	Up to 5 minutes (13Mbit) Flash Rom with sound management software – up to 255 voice commands
Logo Store	4 Mbit Flash ROM with graphic management software. Up to 250 named logos text string activated
Superior Graphics Management	New high quality Image Import and Placement Software tool
Advanced Text Search facility	Trigger sounds, coupons and logos according to the receipt text
Flash ROM	32 Mbit (external) CG, Logo & Sound 4 Mbit (internal) PGM
Drivers (on CD-ROM in box)	Windows™ 7 (32/64 bit), Vista™ (32/64 bit), XP (SP2 & SP3), OPOS™, USB Vendor Class, Star IO, Linux™ (CUPS), MAC™ OS X, Java-POS™, Serial Port Emulator
Web – Download Qtr 3 2010	
Emulations	Star Line Mode & ESC/POS™
Interface	Built-in USB as standard with 2nd port for – Parallel, Serial, Ethernet & PoweredUSB options
Peripheral Drive Circuit	2 circuits (24V max. 1A) 1 compulsion input
Power Supply (PS60A-24B only)	External option with Hosiden connector Operating / Waiting – Average 1.56A / 0.12A
Dimensions (w x d x h) mm	144 x 227.7 x 114 144 x 316.2 x 114 with Cable Cover
Printer Reliability	60 million lines
Autocutter / Life	Full / Partial adjustable (Guillotine) up to 2 million cuts
Options (USB interface cable included in box with installation CD-ROM and power switch cover)	PS60 power supply (PS60A-24B only) Shelf mount frame Interface cable cover Parallel, Serial, Ethernet, USB & PoweredUSB

STAR MICRONICS CO., LTD.

536 Nanatsushinya, Shimizu-ku,
Shizuoka, 424-0066 Japan
Tel: +81-54-347-2163
Fax: +81-54-347-0409

