

Attaching the TSP700 splash proof cover

1. Unpacking : Confirm that all accessories are included.

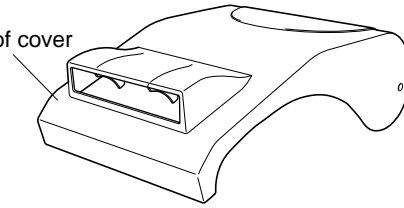


Double-sided tape



Boss × 3
(including one spare)

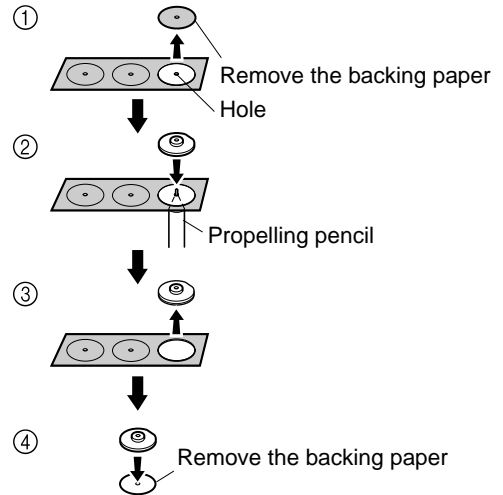
Splash proof cover



2. Attachment procedure :

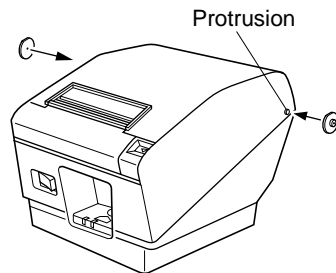
2-1. Attaching the double-sided tape

- ① Remove the backing paper from the upper surface of the tape (the printed side.).
- ② Place the bosses on the double-sided tape so that its holes are aligned with the boss holes, and then attach the tape (it is recommended that the tip of a propelling pencil is used as a guide for aligning the center of the holes.).
- ③ With the contact sheet stuck in place, remove the bosses from the double-sided tape.
- ④ Remove the backing paper from the underside of the tape.



2-2. Attaching the bosses

Align the two bosses with the protrusions on the left and right hand side of the printer cover and stick them in place.



2-3. Attaching the splash proof cover

- ① Align the splash proof cover with the center of the boss holes to attach it.
- ② Check to ensure that the splash proof cover opens and closes smoothly.

